

DATA SHEET

ENTERPRISE

ARUBA ORCHESTRATOR-  
AS-A-SERVICE

Aruba Orchestrator-as-a-Service (OaaS) is a secure, cloud-hosted, single-tenant Software-as-a-Service subscription that enables enterprises to centrally assign business intent policies to applications and manage and monitor their Aruba EdgeConnect SD-WAN on a global basis. An intuitive user interface provides unprecedented levels of visibility into both data center and cloud-based applications.



OaaS allows enterprises to orchestrate application policies across thousands of appliances, through a single pane of glass, driven by business intent policies.

The Aruba OaaS service option is appealing to enterprises that prefer a zero-CAPEX SD-WAN management solution to access all of the capabilities of the Aruba Orchestrator platform without the capital investment and associated complexity of managing on-premise infrastructure.

KEY FEATURES

- **Single screen administration:** Enables rapid and consistent implementation of network-wide business intent policies, eliminating many of the repetitive and mundane manual steps required to configure and connect remote offices and branch locations

- **Centralized orchestration and policy automation:** Empowers network administrators to centrally define and orchestrate granular security policies and create secure end-to-end zones across any combination of users, application groups and virtual overlays, pushing configurations to sites in accordance with business intent. In addition, it offers seam-less drag and drop service chaining to next generation security services
- **Live view:** Monitors real-time throughput, loss, latency and jitter across business intent overlays and the underlying transport services to proactively identify potential performance impacts
- **Granular real-time monitoring and historical reporting:** Provides specific details into application, location, and network statistics, including continuous performance monitoring of loss, latency, and packet ordering for all network paths; identifies all web and native application traffic by name and location, and alarms and alerts allow for faster resolution of network issues
- **Bandwidth cost savings reports:** Documents the cost savings for moving to broadband connectivity

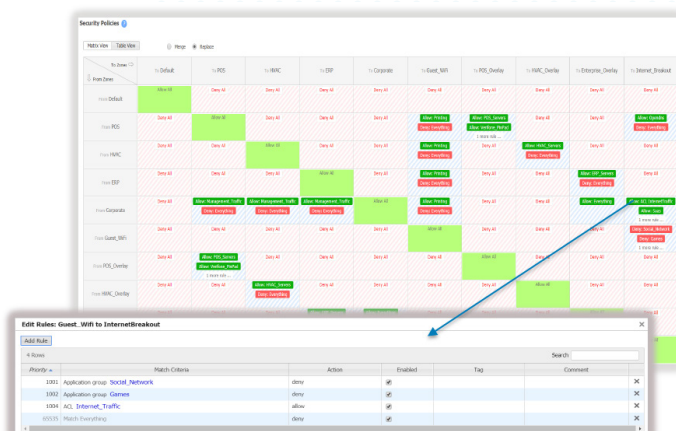


Figure 1: A matrix view from Aruba Orchestrator, provides an easy-to-read, intuitive visualization of configured zones and defined whitelist exceptions.



### SD-WAN DEPLOYMENTS DONE FASTER

OaaS enables secure zero-touch provisioning of Aruba EdgeConnect appliances in the branch. The OaaS automates the assignment of business intent policies to ensure faster and easier connectivity across multiple branches, eliminating the configuration drift that can result from manually updating rules and access control lists (ACLs) on a site-by-site basis. With Aruba Orchestrator, enterprises can:

- Avoid WAN reconfigurations by delivering applications to users in customized virtual overlays
- Align application delivery with business goals through business intent policies
- Simplify branch deployments with Aruba EdgeConnect profiles that describe the virtual and physical configuration of the location

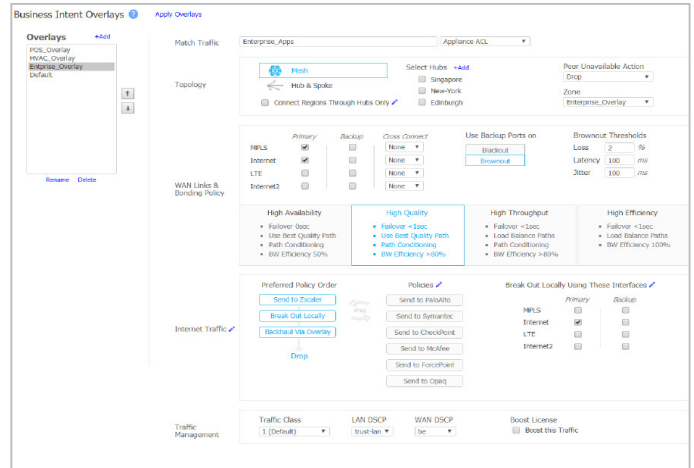


Figure 2: Aruba Orchestrator enables centralized definition and automated distribution of network-wide business intent policies to multiple branch offices.

### REAL-TIME HEALTH MONITORING AND HISTORICAL REPORTING

Aruba Orchestrator provides specific details into SD-WAN health and performance:

- Appliance dashboard displays a centralized summary of appliances connected on the network, top talkers, applications, topology map and more

- Health map provides a high-level view of Aruba EdgeConnect appliance status and network health based on configured thresholds for packet loss, latency and jitter
- Monitoring and reporting tools generate and schedule multiple customized reports to track a variety of performance metrics; reports may be scheduled on a regular basis and automatically sent to specific individuals or departments

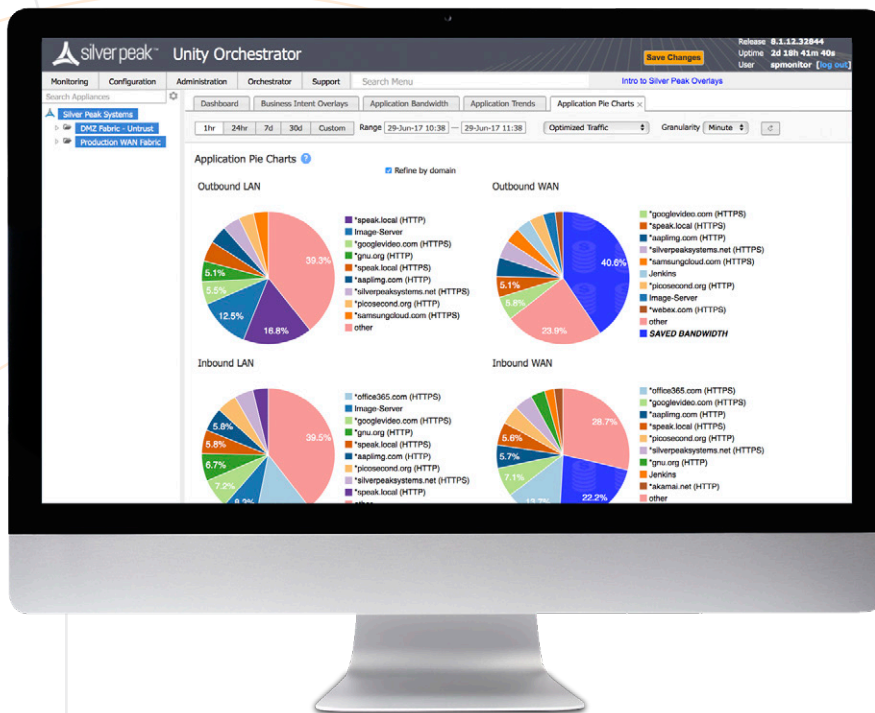


Figure 3: Aruba Orchestrator monitoring report on application consumption.



## GAIN CONTROL OVER THE CLOUD

Gain an accurate picture of how software-as-a-service (SaaS) and infrastructure-as-a-service (IaaS) are being used across the organization.

- Name-based identification and reporting of all cloud and data center-hosted applications
- Tracking of SaaS provider network traffic
- Cloud Intelligence provides internet mapping of optimal egress to SaaS services

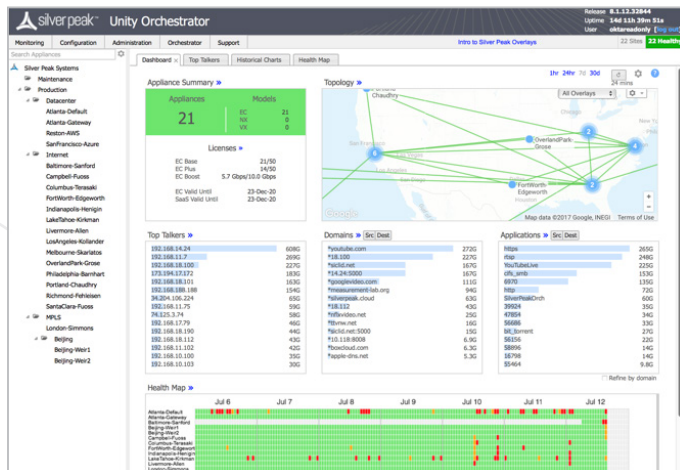


Figure 4: Aruba Orchestrator dashboard summarizes overall SD-WAN health, appliance status, topology and top applications.

## CLOUD HOSTED ARUBA ORCHESTRATOR-AS-A-SERVICE

Aruba Orchestrator-as-a-Service is a managed single tenant subscription service, hosted by Aruba and supports the following capabilities for deployment and management of an Aruba EdgeConnect SD-WAN network:

- Automated managed backup
  - 7 days of configuration and statistics
  - Redundancy with hosting in multiple availability zones
- Built-in high availability
  - Hosted across multiple availability zones
  - SD-WAN network always operates, even when Orchestrator is unreachable
- Highly secure VPC environment
  - Database encryption
  - Single tenant offering
- Multi-instance
  - Available in multiple regions\*
  - US East, EMEA-Frankfurt

\*Check for latest geographic availability on [arubanetworks.com](http://arubanetworks.com)

## ARUBA ORCHESTRATOR-AS-A-SERVICE LICENSING

Optional Cloud-hosted Aruba Orchestrator as-a-Service (OaaS) requires a separate term based license (1-5 years) based on the Aruba EdgeConnect network sizing requirements and is available in 3 convenient sizes (small, medium and large) to meet current and future enterprise network scaling requirements. There is flexibility for enterprises to upgrade their license as their network scales in size.



### SMALL

Suitable for up to ~50  
Aruba EdgeConnect appliances



### MEDIUM

Suitable for up to ~200  
Aruba EdgeConnect appliances



### LARGE

Suitable for more than ~200  
Aruba EdgeConnect appliances

Note: Aruba Orchestrator performance is dependent on multiple factors beyond appliance count. The number of appliances each tier can manage is an approximation.



## DELIVERING TRUE BUSINESS VALUE

Aruba's cloud-hosted Aruba Orchestrator provides a highly reliable, zero-CAPEX alternative deployment model. Organizations can subscribe to Aruba Orchestrator as a software service that supports all Aruba Orchestrator features without the complexity of managing an on-premise virtual compute and storage resource solution. A unique Aruba Orchestrator instance for each enterprise customer ensures secure SD-WAN management, monitoring and reporting while preserving the data integrity.

## BENEFITS

With Aruba Orchestrator-as-a-Service, enterprises can simplify connectivity, infrastructure management and network administration for their Aruba EdgeConnect SD-WAN networks. This service offers the following benefits:

- Highly available, zero-CAPEX solution
- Eliminates complexity and costs associated with managing on-premise infrastructure
- Provides real-time application visibility, historical reporting and live views of network performance
- Flexibility to expand network capacity and sites on-demand
- Simplifies IT operations for SD-WAN network management and the need to manage physical infrastructure and backup operations
- Protects customer network and data integrity
  - Per-tenant data isolation and integrity
  - Per-tenant upgradeability, maintenance, backup/restoration