

DATA SHEET

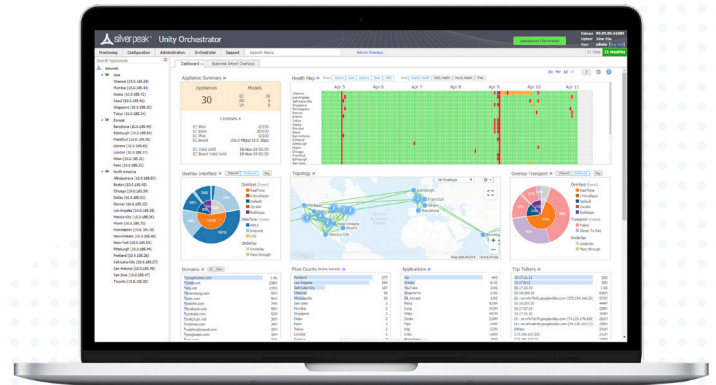
ENTERPRISE

ARUBA ORCHESTRATOR

Aruba Orchestrator offers enterprises the unique ability to centrally assign business intent policies to secure and control all Aruba EdgeConnect software-defined Wide Area Network (SD-WAN) traffic. An intuitive user interface provides complete observability into both data center and cloud-based applications.

KEY FEATURES

- **Single Screen Administration:** Enables rapid and consistent implementation of network-wide business intent policies, eliminating many of the repetitive and mundane manual steps required to configure and connect remote offices and branch locations
- **Centralized Orchestration and Policy Automation:** Empowers network administrators to centrally define and orchestrate granular security policies and create secure end-to-end zones across any combination of users, application groups and virtual overlays, pushing configurations to sites in accordance with business intent. In addition, it offers automated orchestration with leading cloud-delivered security services
- **Live View:** Monitors real-time throughput, loss, latency and jitter across business intent overlays and the underlying transport services to proactively identify potential performance impacts



- **Granular Real-Time Monitoring and Historical Reporting:** Provides specific details into application, location, and network statistics, including continuous performance monitoring of loss, latency, and packet ordering for all network paths; identifies all web and native application traffic by name and location, and alarms and alerts allow for faster resolution of network issues
- **Bandwidth Cost Savings Reports:** Documents the cost savings for migrating to broadband connectivity

SD-WAN DEPLOYMENTS DONE FASTER

Aruba Orchestrator enables secure zero-touch provisioning of Aruba EdgeConnect appliances in branch sites, the data center and cloud instances. Aruba Orchestrator automates the assignment of business intent policies to ensure faster and easier connectivity across multiple branches, eliminating the configuration drift that can come from manually updating rules and access control lists (ACLs) on a site-by-site basis. With Aruba Orchestrator, enterprises can:

- Avoid WAN reconfigurations by delivering applications to users in customized virtual overlays
- Align application delivery to business goals through business intent policies
- Simplify branch deployments with Aruba EdgeConnect profiles that describe the virtual and physical configuration of the location

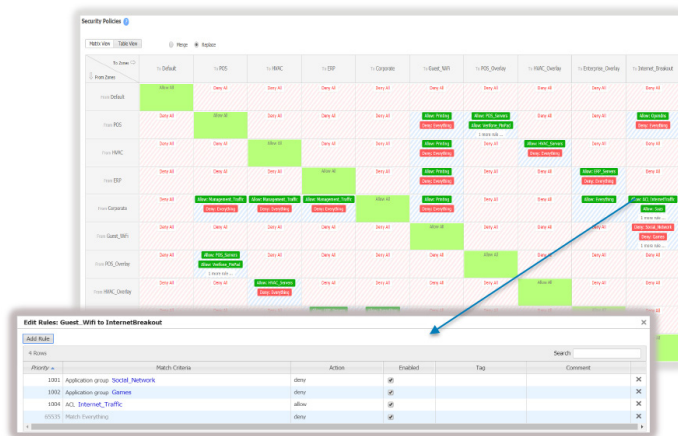


Figure 1: A matrix view from Aruba Orchestrator, provides an easy-to-read, intuitive visualization of configured zones and defined whitelist exceptions.

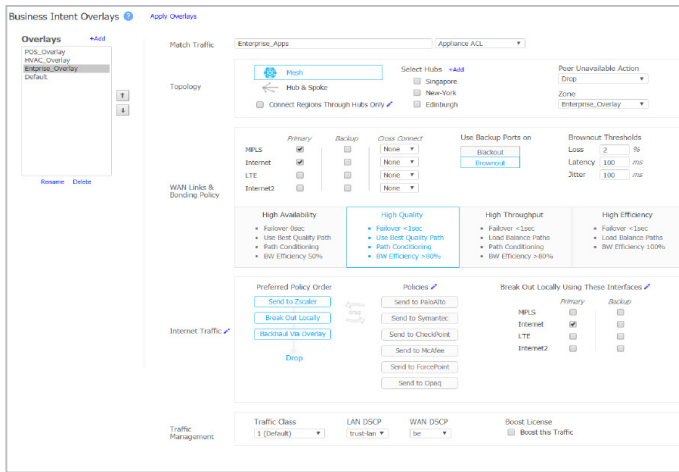


Figure 2: Aruba Orchestrator enables centralized definition and automated distribution of network-wide business intent policies to multiple branch offices.

REAL-TIME HEALTH MONITORING AND HISTORICAL REPORTING

Aruba Orchestrator provides specific details into SD-WAN health and performance:

- Appliance dashboard displays a centralized summary of appliances connected on the network, top talkers, applications, topology maps and more
- Automate orchestration with cloud-delivered security services directly from the Orchestrator console
- Health map provides a high-level view of Aruba EdgeConnect appliance status and network health based on configured thresholds for packet loss, latency and jitter

- Monitoring and reporting tools to generate and schedule multiple customized reports to track a variety of performance metrics; reports may be scheduled on a regular basis and automatically sent to specific individuals or departments

GAIN CONTROL OVER THE CLOUD

Gain an accurate picture of how software-as-a-service (SaaS) and infrastructure-as-a-service (IaaS) are being used within the organization.

- Name-based identification and reporting of all cloud and data center-hosted applications
- Tracking of SaaS provider network traffic
- Cloud Intelligence provides internet mapping of optimal egress to SaaS services

ARUBA ORCHESTRATOR DEPLOYMENT MODELS

- On-premise: Deploy Aruba Orchestrator as a virtual machine in an existing environment
- Public clouds: Deploy Aruba Orchestrator as a virtual instance within Amazon Web Services (AWS), Azure, or Google cloud environments
- Cloud-hosted Aruba Orchestrator: A cloud-hosted service by Aruba provides a highly reliable, zero-CAPEX alternative deployment model. With an optional subscription license, organizations can subscribe to Aruba Orchestrator as a software service that supports all Aruba Orchestrator features without the complexity of managing on premise virtual compute and storage resources. Unique Aruba Orchestrator instances for each enterprise ensures secure SD-WAN management, monitoring and reporting

DELIVERING TRUE BUSINESS VALUE

Aruba EdgeConnect is the most agile SD-WAN unified edge platform that also powers industry-leading performance improvements using any combination of WAN transport services. Aruba customers benefit from significant:

- Performance: End-user satisfaction and productivity are enhanced due to consistent and predictable performance and availability of data center and cloud applications
- Visibility and Control: Customers benefit from complete observability into data center and cloud applications

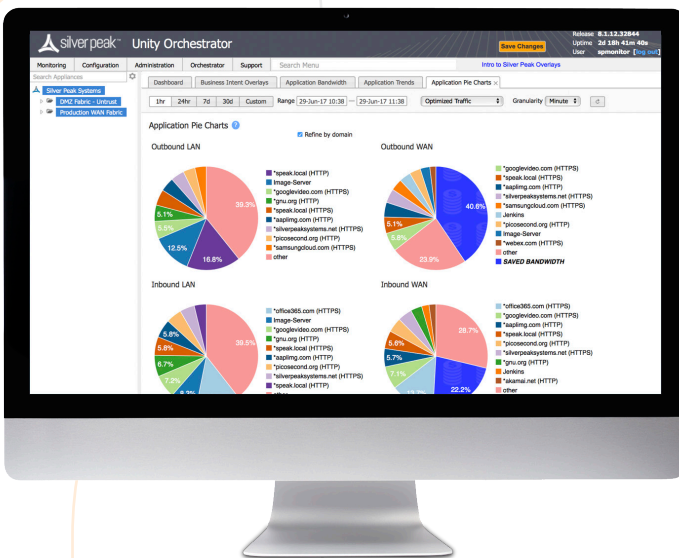


Figure 3: Aruba Orchestrator monitoring report on application consumption.



- Security: Centralized segmentation of users, applications and WAN services into secure zones with automated application traffic steering across the LAN and WAN in compliance with predefined security policies, regulatory mandates and business intent
- Secure access service edge (SASE): Automated orchestration with leading cloud-delivered security services to deliver consistent security policy enforcement across the WAN to support a secure access service edge architecture
- Extensibility: Fully compatible with existing WAN infrastructure hardware and transport services, customers can rapidly and non-disruptively augment or replace their MPLS networks with any form of broadband connectivity; furthermore, customers can retire conventional routers with the Aruba EdgeConnect SD-WAN edge platform that unifies network functions like SD-WAN, WAN optimization, routing and security into a single software instance; all managed centrally from the Aruba Orchestrator; easy integration with orchestration systems is provided via RESTful APIs
- Savings: With Aruba EdgeConnect, enterprises can dramatically lower connectivity, equipment and network administration costs; these savings are achieved through:
 - A reduction in bandwidth costs by actively using broadband connectivity
 - OPEX: A reduction in the time and expertise needed to connect branch offices
 - CAPEX: A reduction in appliance sprawl and moving to a “thin branch” architecture

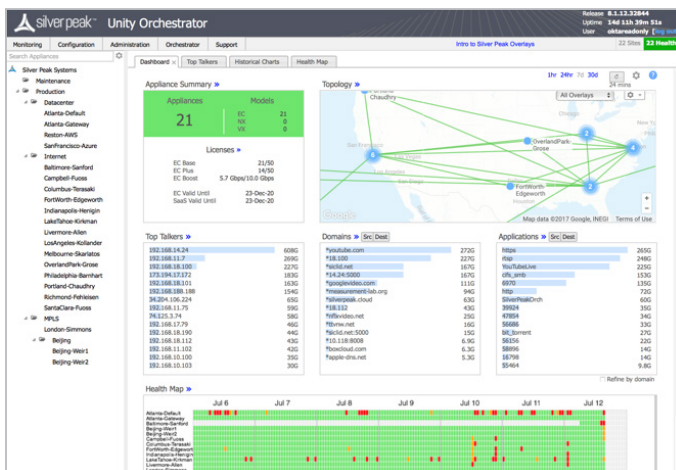


Figure 4: Aruba Orchestrator Dashboard summarizes overall SD-WAN health, appliance status, topology and top applications.